

# FAIR STAND OPTIONS

## USE THIS TO HELP DETERMINE STAND NEEDS AND COST

1

Space Only \$ 540 / m<sup>2</sup>

### Services included for space only exhibitors;

- Exhibitor badges as required
- Internet Service-Wireless access
- Visitor invitation tickets
- Full page company information in the fair catalogue and in CD format
- Company contact details on the show website.
- Use of Press Room and Business Centre
- One copy of printed and digital fair catalogue
- International Welcome Desk

2

Electricity \$ 300

- Electric power up to 10Kw; power link, expendable supplies and service fee
- Electric power needs over 10Kw is subject to charge.

3

### PACKAGE STAND OPTIONS

1

Basic Stand

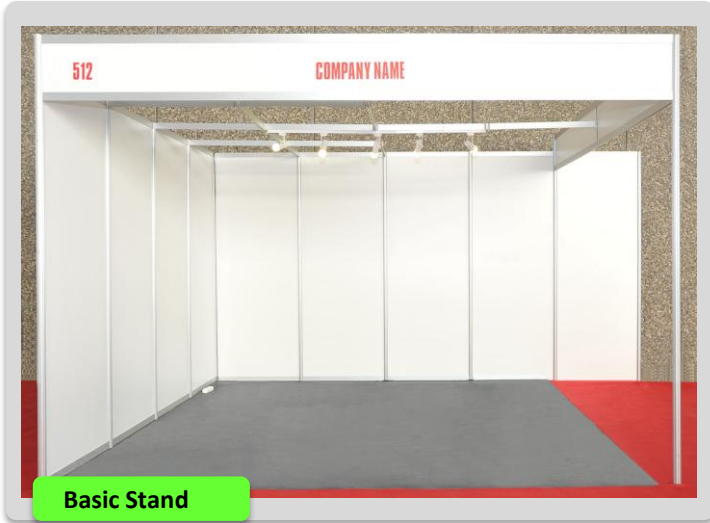
2

Superior Stand

3

Premium Stand

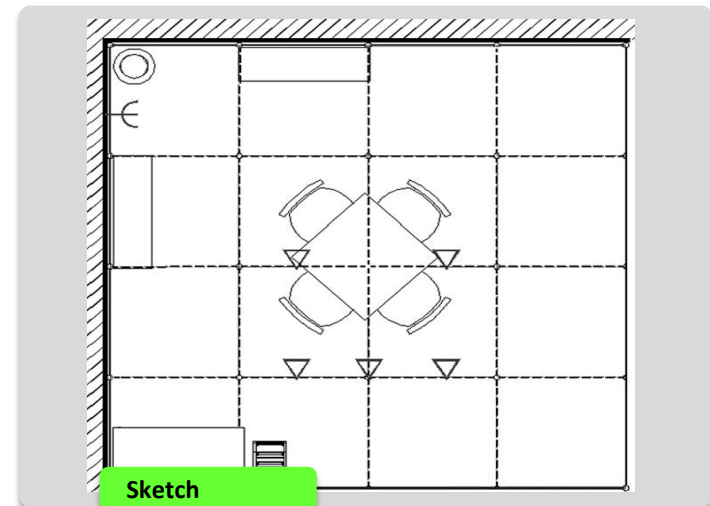
# BASIC STAND



Basic Stand



Package Stand



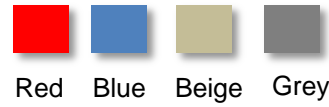
Sketch

1 Space \$ 540 / m<sup>2</sup>

2 Basic Stand \$50 / m<sup>2</sup>

- Aluminium standard construction
- White melamine coated chipboard panels – 6mm (Applicable for 1, 2, 3, 4 sided stands)
- 248cm of stand height
- Stand fascia panel with company name and stand number
- 1 spot light (75 W) for each 3m<sup>2</sup>
- 1 plug group socket (220 Volt)
- Standard Carpet

Please choose your carpet colour



Red Blue Beige Grey

3 Additional Furniture Package

- 1 werzalit table (80cm\*80cm)
- 4 chairs
- 1 info desk
- 2 shelves
- 1 waste bin

Package Price \$ 270 / 1 Pkg.

4 Additional material orders

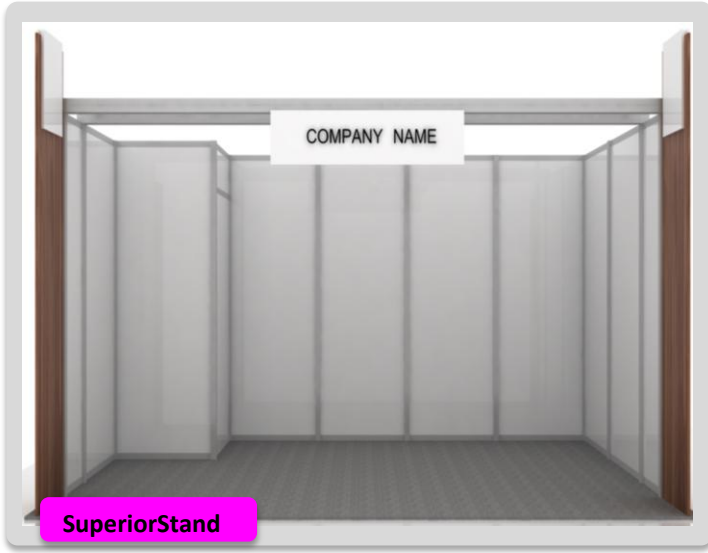
Please contact your local sales representative.

5 Electricity \$ 300

- Electric power up to 10Kw; power link, expendable supplies and service fee
- Electric power needs over 10Kw is subject to charge

You can create your own stand.  
Please contact your local sales representative  
for all inquiries

# SUPERIOR STAND



1 Space \$ 540 / m<sup>2</sup>

2 Superior Stand \$ 110 / m<sup>2</sup>

- Aluminium construction (W 80mm\*80mm, H 250cm)
- White melamine coated chipboard panels (Applicable for 1, 2, 3, 4 sided stands)
- Wooden laminate decorative arbour column application on the corners (L30\*H280cm)
- 1\*1 = 1m<sup>2</sup> lockable room
- Fascia panel with company name
- Ceiling spot light for each 3m<sup>2</sup> (100 W )
- 1 plug group socket (220 Volt)
- Standard Carpet

Please choose your carpet colour



Red Blue Beige Grey

3 Additional Furniture Package

- 1 table ( 80\*80cm chrome base, melamine coated chipboard)
- 4 chairs
- 1 standard lockable info desk
- 1 chrome base bar stool
- 1 brochure stand
- 1 waste bin

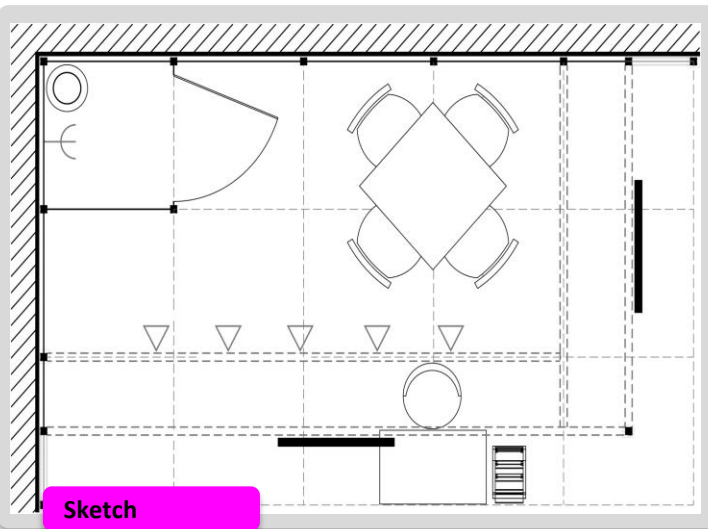
Package Prize \$ 350 / 1 Pkg.

4 Additional material orders

Please contact your local sales representative.

5 Electricity \$ 300

- Electric power up to 10Kw; power link, expendable supplies and service fee
- Electric power needs over 10Kw is subject to charge.



You can create your own stand.  
Please contact your local sales representative  
for all inquiries

# PREMIUM STAND



1 Space \$ 540 / m<sup>2</sup>

2 Premium Stand \$ 130 / m<sup>2</sup>

- Aluminium construction (W 90mm\*90mm, H 297cm)
- White melamine coated chipboard panels (Applicable for 1, 2, 3, 4 sided stands)
- Special triptych wooden laminate decorative arbour column application on the corners (L45\*H297cm)

Please choose your decorative arbour colour



Red



Light Blue



Dark blue



Grey



Black

- 2\*1 = 2m<sup>2</sup> lockable room
- Fascia panel with company name and stand number
- Ceiling spot light for each 5m<sup>2</sup> (70 W HQI)
- 1 plug group socket (220 Volt)
- Standard Carpet

Please choose your carpet colour



Red



Blue



Beige



Smoke-colored



3 Additional Furniture Package

- 2 glass tables (Ø 80cm)
- 8 chairs
- 1 lockable custom design info desk
- 1 chrome base bar stool
- 1 brochure stand
- 1 illuminated showcase (with 2 glass shelves and 1 lockable cabinet)
- 1 waste bin

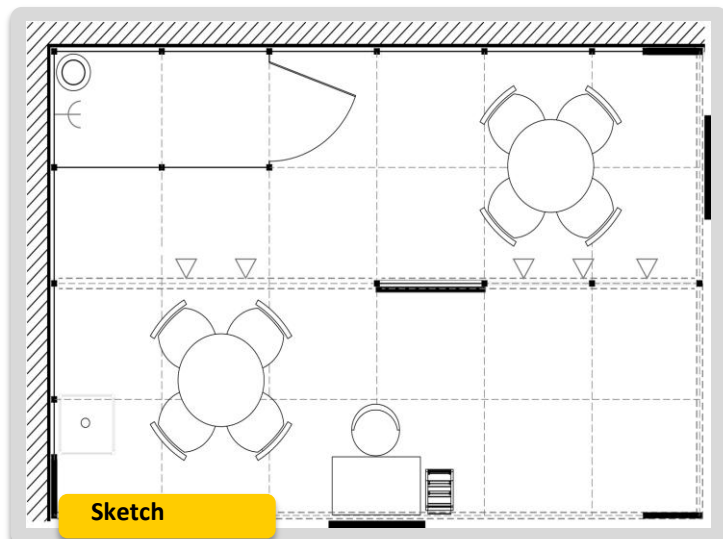
Package Prize \$ 600 / 1 Pkg.

4 Additional material orders

Please contact your local sales representative.

5 Electricity \$ 300

- Electric power up to 10Kw; power link, expendable supplies and service fee
- Electric power needs over 10Kw is subject to charge.



You can create your own stand.  
Please contact your local sales representative for all inquiries